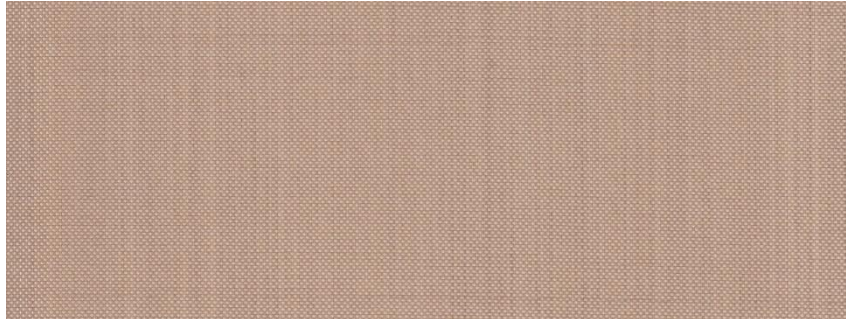


116.15 TR



Product	Product category	Coating
PTFE GLASS FABRIC	TEAR RESISTANT SERIES	PTFE

Properties	Metric		Imperial	
Standard width(s) <i>Please ask for other widths</i>	1000	mm	39.5	inches
Nominal thickness	0,15	mm	0.0059	inches
Weight	296	gr/m ²	8.73	oz/sq yd
PTFE content	63	%	63	%
Tear strength - warp x weft	55 x 50	N	12 x 11	Ibs
Tensile strength	1500	N/5 cm	171	Ibs/inches
Temperature resistance	-150 to +260	°C	-238 to +500	°F

Specialty formulated PTFE coating provide more flexibility and improve tear resistance. These fabrics are typically used in applications requiring high-flex properties or belting application with small diameter pulleys. The product does not contain banned substances as described in RoHS directive and will not affect RoHS compliance.



This product has been manufactured in a facility certified by ISO 9001 Quality Management System.

Note: Nominal thickness, weight and tensile strength values are typical and are not intended as a specification minimum.
 Nominal thickness tolerance: ±0,01 mm - Weight tolerance g/m² = ±%5 - Tensile strength tolerance -%10
 All technical data are based on average values. These values are not intended for use in preparing specifications. Technical information contained herein are based on test results FIBERFLON believes to be reliable, but they are not to be construed in any manner as warranties expressed.
 All data is subject to change without notice.