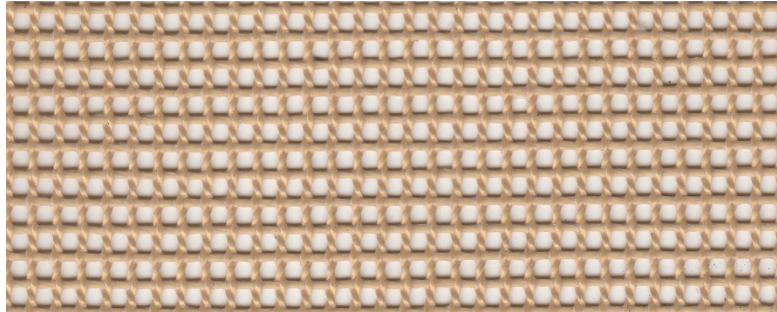


9006



Product	Product category	Coating
PTFE KEVLAR® FABRIC	OPEN MESH SERIE	PTFE

Properties	Metric		Imperial	
Standart width(s) <i>Please ask for other widths</i>	2150	mm	84.7	inches
Thickness	1,00	mm	0.0393	inches
Weight	520	gr/m ²	15.34	oz/sq yd
Mesh size	2 x 2	mm	0.0787 x 0.0787	inches
PTFE content	42	%	42	%
Open area	60	%	60	%
Tensile strength	4500	N/5 cm	514	Ibs/inches
Temperature resistance	-73 to 220	°C	-100 to 428	°F

Excellent properties of Fiberflon Open Mesh Belts:

Outstanding temperature resistance, Resistant to corrosive agents, Low thermal mass, Controlled porosity, Superior non-stick surface, easy to clean, High dielectric strength, Dimensional stability, Non-toxic, Superior tracking. The product does not contain banned substances as described in RoHS directive and will not affect RoHS compliance.



Note: Nominal thickness, weight and tensile strength values are typical and are not intended as a specification minimum. Weight Tolerance g/m² = ±%5
 All technical data are based on average values. These values are not intended for use in preparing specifications. Technical information contained here in are based on test results FIBERFLON believes to be reliable, but they are not to be construed in any manner as warranties expressed.
 All data is subject to change without notice.