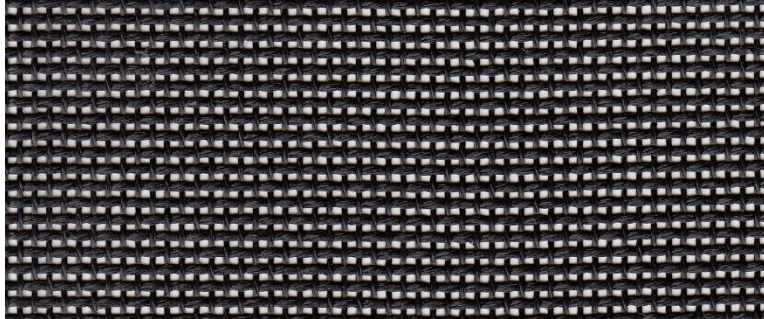


# 304 AS



Product	Product category	Coating
PTFE GLASS FABRIC	OPEN MESH SERIE	PTFE

Properties	Metric		Imperial	
Standart width(s) <i>Please ask for other widths</i>	1530, 1780, 3150	mm	60.3, 70.1, 124	inches
Thickness	0,70	mm	0.0275	inches
Weight	580	gr/m <sup>2</sup>	17.11	oz/sq yd
Mesh size	1 x 1	mm	0.0393 x 0.0393	inches
PTFE content	23	%	23	%
Open area	24	%	24	%
Surface resistivity	1x10 <sup>6</sup> max	ohms/sq	1x10 <sup>6</sup> max	ohms/sq
Tensile strength	2500	N/5 cm	286	Ibs/inches
Temperature resistance	-73 to 260	°C	-100 to 500	°F

**Excellent properties of Fiberflon Open Mesh Belts:**

Outstanding temperature resistance, Resistant to corrosive agents, Low thermal mass, Controlled porosity, Superior non-stick surface, easy to clean, High dielectric strength, Dimensional stability, Non-toxic, Superior tracking. The product does not contain banned substances as described in RoHS directive and will not affect RoHS compliance.



Note: Nominal thickness, weight and tensile strength values are typical and are not intended as a specification minimum. Weight Tolerance g/m<sup>2</sup> = ±%5  
 All technical data are based on average values. These values are not intended for use in preparing specifications. Technical information contained here in are based on test results FIBERFLON believes to be reliable, but they are not to be construed in any manner as warranties expressed.  
 All data is subject to change without notice.