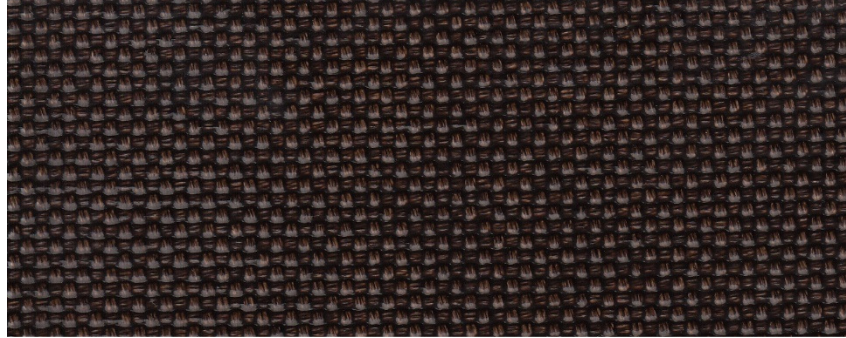


# FIBERTEX 1000



Product	Product category	Coating
PTFE GLASS FABRIC FLEXIBLE COMPOSITE	FIBERTEX SERIE	PTFE

Properties	Metric		Imperial	
Standart width(s) <i>Please ask for other widths</i>	1600	mm	63	inches
Thickness	0,90	mm	0.0354	inches
Weight	1120	gr/m <sup>2</sup>	33.03	oz/sq yd
PTFE content	46	%	46	%
Tensile strength	7000	N/5 cm	800	Ibs/inches
Tear resistance ( <i>Trapez</i> )	800	N	180	Ibs
Temperature resistance	310	°C	590	°F

**Fibertex fabric expansion joint composites:**

High quality woven fiberglass fabrics coated with a specially formulated fluoropolymer coating designed to provide enhanced flex properties and excellent high temperature performance, fire and chemical resistance, release, and weatherability properties for non-metallic expansion joints.

The product does not contain banned substances as described in RoHS directive and will not affect RoHS compliance.



Note: Nominal thickness, weight and tensile strength values are typical and are not intended as a specification minimum. Weight Tolerance g/m<sup>2</sup> = ±%5  
 All technical data are based on average values. These values are not intended for use in preparing specifications. Technical information contained here in are based on test results FIBERFLON believes to be reliable, but they are not to be construed in any manner as warranties expressed.  
 All data is subject to change without notice.