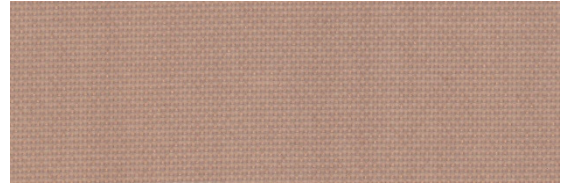
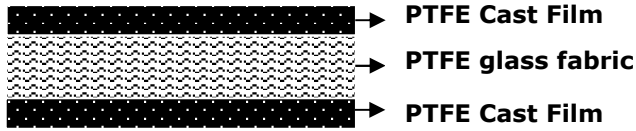


# FIBERLAM TT30



Product	Product category	Lamination
PTFE CAST FILM LAMINATED GLASS FABRIC	FIBERLAM SERIE	MULTILAYER PTFE CAST FILM

Properties	Metric		Imperial	
Standart width(s) <i>Please ask for other widths</i>	1000	mm	39.5	inches
Thickness	0,30	mm	0.0118	inches
Weight	650	gr/m <sup>2</sup>	19.17	oz/sq yd
PTFE content	69	%	69	%
Tensile strength	2700	N/5 cm	308	Ibs/inches
Temperature resistance	-73 to 260	°C	-100 to 500	°F

FIBERLAM laminated products features multi-layer PTFE cast film laminated on both sides of PTFE / glass fabric, uniform thickness, crack and pinhole free surface.

**FDA Compliant**

Suitable for use in direct food contact applications under the applicable requirements of, 21CFR 177.1550

**Applications**

Contact grill machine conveyor belts, continious food cooking, freezing process belts.

The product does not contain banned substances as described in RoHS directive and will not affect RoHS compliance.



Note: Nominal thickness, weight and tensile strength values are typical and are not intended as a specification minimum. Weight Tolerance g/m<sup>2</sup> = ±%5  
All technical data are based on average values. These values are not intended for use in preparing specifications. Technical information contained here in are based on test results FIBERFLON believes to be reliable, but they are not to be constured in any manner as warranties expressed.  
All data is subject to change without notice.